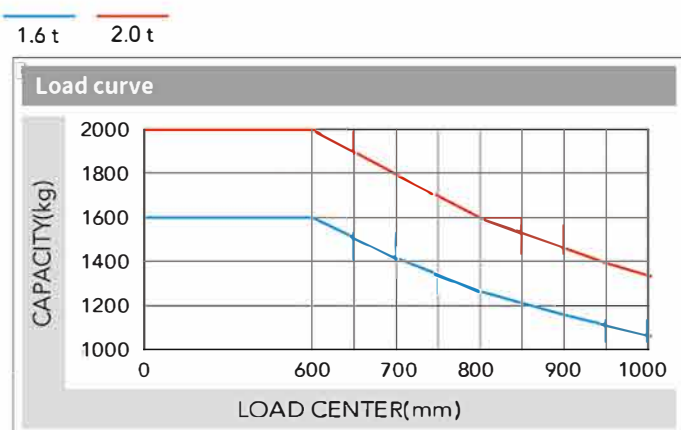
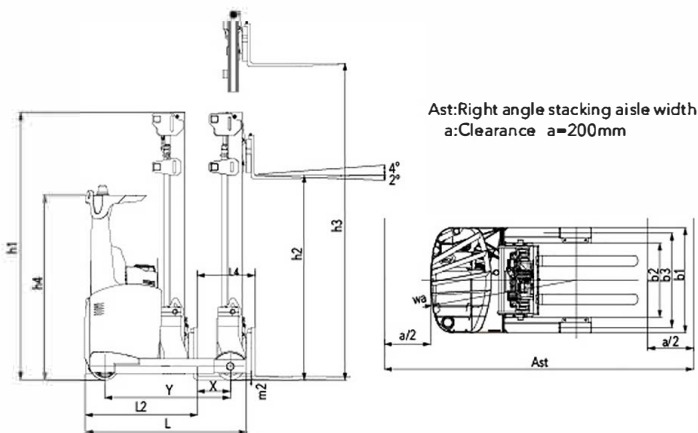


WIDE VIEW FULL FREE 3-STAGE MAST

Mast model	Lifting height h3 (mm)		Load capacity (load center 600mm)(kg)		Height (mast lowered) h1 (mm)	Free lifting height (with backrest) (mm)	Service weight(kg)				Fork tilt angle (front/rear)α/β
	CQD16-GB2SL	CQD20-GB2SL	CQD16-GB2SL	CQD20-GB2SL			CQD16-GB2SL	CQD16-GB2SL	CQD20-GB2SL	CQD20-GB2SL	
ZSM460	4600	4600	1600	2000	2314	1280	3505	3675*	3564	3734*	2°/4°
ZSM480	4800	4800	1600	2000	2381	1340	3524	3694*	3583	3753*	2°/4°
ZSM540	5400	5400	1600	2000	2581	1540	3582	3752*	3641	3811*	2°/4°
ZSM570	5700	5700	1550	1900	2681	1640	3610	3789*	3669	3839*	2°/4°
ZSM630	6300	6300	1500	1900	2881	1840	3668	3838*	3727	3897*	2°/4°
ZSM675	6750	6750	1450	1800	2982	1940	3701	3871*	3760	3930*	2°/4°
ZSM700	7000	7000	1400	1700	3065	2030	3725	3895*	3784	3954*	2°/4°
ZSM715	7150	7150	1400	1700	3115	2080	3739	3909*	3798	3968*	2°/4°
ZSM750	7500	7500	1300	1700	3232	2190	3773	3943*	3832	4002*	2°/4°
ZSM800	8000	8000	1200	1500	3398	2360	3821	3991*	3880	4050*	2°/4°
ZSM850	8500	8500	1100	1300	3564	2530	3869	4039*	3928	4098*	2°/4°
ZSM900	9000	9000	900		3730	2690	3916	4086*			2°/4°
ZSM950	9500	9500	800		3898	2860	3965	4135*			2°/4°

WIDE VIEW MAST

Mast model	Lifting height h3 (mm)	Load capacity (load center 600mm)(kg)	Height (mast lowered) h1 (mm)	Service weight(kg)		Fork tilt angle (front/rear)α/β
				CQD16-GB2SL	CQD16-GB2SL	
M290	2900	1600	2200	3276	3446*	2°/4°
M320	3200	1600	2250	3295	3465*	2°/4°
M360	3600	1600	2350	3324	3494*	2°/4°
M380	3800	1600	2650	3338	3508*	2°/4°
M400	4000	1600	2750	3353	3523*	2°/4°
M420	4200	1600	2850	3366	3536*	2°/4°
M440	4400	1600	2950	3379	3549*	2°/4°
M460	4600	1600	3050	3435	3605*	2°/4°
M500	5000	1500	3250	3463	3633*	2°/4°



Note: The vertical axis stands for load capacity and the horizontal axis stands for load center which is calculated from the front surface of the forks to the gravity of the standard load. The standard load means a cubic with 1000mm edge length. When mast is tilted forward, using non-standard forks or loading large goods, the load capacity will be reduced. The load capacity of standard mast at different load center can be known from this load chart.

RENEWABLE ENERGY TECHNOLOGIES

With the use of the excellent load-sensing steering system and AC controlling renewable energy technologies, the forklift is more energy-saving and the working hour of the battery is extended by 15%.

15%

Manufacturer's Data and Design Characteristics

Character				
1.01 Manufacturer			HELI	
1.02 Model			CQD16	CQD20
1.03 Configuration number			GB2SL	GB2SL
1.04 Load capacity	Q	kg	1600	2000
1.05 load center distance	C	mm	600	600
1.06 Power mode			Battery	Battery
1.07 Driving mode			Seated	Seated
1.08 Wheel base	Y	mm	1450	1515
Tyre				
2.01 Tyre type			Polyurethane	Polyurethane
2.02 Wheels, number front/rear (x=driven wheels)			1x/2	1x/3
2.03 Track width, rear	b3	mm	1157	1143
2.04 Wheel size, rear		mm	φ285x100	φ330x100
2.05 Wheel size, front		mm	φ343x114	φ343x114
Size				
3.01 Lift height	h3	mm	4600	4600
3.02 Free lift	h2	mm	1280	1280
3.03 Mast height, lowered	h1	mm	2314	2314
3.04 Fork size: thickness X width X length	s/e/l	mm	40x122x1150	40x122x1150
3.05 Fork adjusting width		mm	244~724	244~724
3.06 Fork tilt angle (front/rear)	α/β	°	2°/4°	2°/4°
3.07 Fork sideshifting		mm	±75	±75
3.08 Truck body length (fork excluded)	L	mm	1840	1940*
3.09 Length (the distance from the fork face to rear frame)	L2	mm	1372	1472*
3.10 Truck body width	b1	mm	1270	1270
3.11 Distance between support arms	b2	mm	900	900
3.12 Reach distance	L4	mm	555	620
3.13 Height of cab	h4	mm	2215	2215
3.14 Ground clearance, below mast	m2	mm	75	75
3.15 Turning radius	Wa	mm	1689	1788*
3.16 Load distance, centre of support arm wheel to face of forks	X	mm	313	383
3.17 Aisle width with pallet 1200x1200	Ast	mm	2960	3060*
3.18 Aisle width with pallet 1000x1200 length ways	Ast	mm	2800	2900*
Performance				
4.01 Travelling speed: with/without load		km/h	11/12	10/11
4.02 Lifting speed: with/without load		m/s	0.34/0.53	0.29/0.45
4.03 Lowering speed: with/without load		m/s	0.5/0.5	0.5/0.5
4.04 Reach speed, with/without load		m/s	0.11/0.11	0.11/0.11
4.05 Maximum climbing ability, with/without load		%	10/15	10/15
Weight				
5.01 Total weight (with battery)		kg	3505	3675*
5.02 Axle load, fork outreached, without load, front/rear		kg	1670/1835	1760/1915*
5.03 Axle load, fork retracted, without load, front/rear		kg	2180/1325	2290/1295*
5.04 Axle load, fork outreached, with load, front/rear		kg	760/4345	785/4490*
5.05 Axle load, fork retracted, with load, front/rear		kg	1880/3225	1945/3340*
Battery				
6.01 Battery voltage/capacity Ks	V/Ah		48/500	48/600
6.02 Battery weight	kg		860	972
6.03 Battery box dimension	mm		1220x353x784	1220x352x784
Motor and controller				
7.01 Drive motor power (60 min)	kW		6	6
7.02 Lifting motor power (15%)	kW		11	11
7.03 Steering motor power (50%)	kW		0.4	0.4
7.04 Type of driving control			MOSFET/AC	MOSFET/AC
7.05 Type of lifting control			MOSFET/AC	MOSFET/AC
7.06 Type of steering control			MOSFET/AC	MOSFET/AC
7.07			HELI special transmission box	HELI special transmission box
7.08 Service brake	Mpa		Electromagnetic brake	Electromagnetic brake
7.09 Hydraulic system working pressure			17.5	20

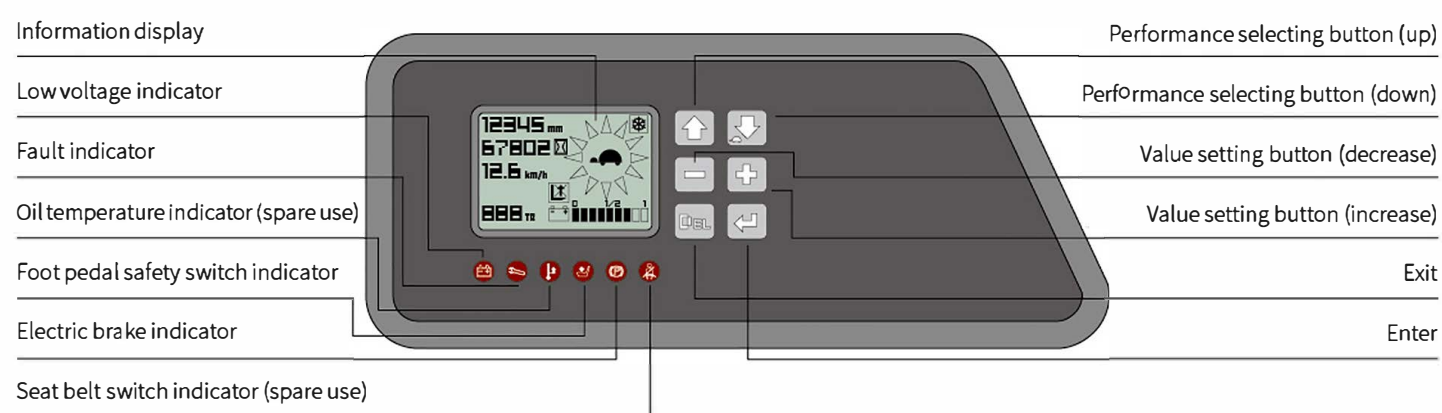
NOTE: *Detailed information about battery, please contact our salesmen or engineer.

HELI

HELI

Reliable special designed instrument

The reliable special instrument gives a complete display of the vital information, like operation status, fault detection, etc. It ensures the operator predominate the vehicle status more intuitive and convenient.



Standard configuration

- AC travelling motor
- AC lifting motor
- AC steering motor
- ZAPI travelling motor controller
- ZAPI lifting motor controller
- ZAPI steering motor controller
- Electromagnetic brake
- DC/DC converter
- Low noisy gear pump
- Control valve (four throw)
- 4600mm three stage full free lift mast
- Integral sideshifter
- Standard fork
- Backrest
- Polyurethane tyre
- LED meter

Optional

- Front working light
- Rearview mirror with view angle
- Safety belt
- Blue warning light
- HE' AN seat
- USB
- Three-stage full free lift mast (other lifting height)
- fork with other length
- Fork extension
- Lifting height pre-selector
- Monitoring system
- Other battery
- Germany hoppecker battery
- Italy FAAM battery
- Battery charger
- Customer made color
- Battery side pulling
- Heating seat
- Grammer seat
- HELI smart fleet management system
- Sealed cab

* Details of specifications and equipment are based on information available at time of printing and may change without notice.

HELI
LIFTING THE FUTURE

heliforklifts.co.nz
Contact us direct or get in touch with your local dealer

0800 435 469
sales@heliforklifts.co.nz

Designed/Printed/Checked/Printing 20200930X



1.6-2.0 t
G2 SERIES SIT-ON TYPE
ELECTRIC REACH TRUCK
FOR COLD STORE

heliforklifts.co.nz